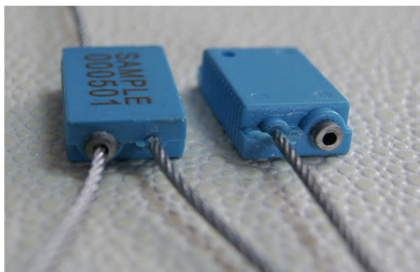
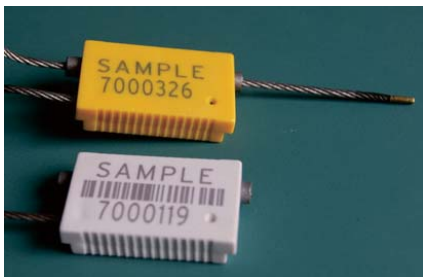


**Lock structure**  
 The lock housing is made with zinc.  
 The hold wheel: disco  
 The wire tube: 2.0mm  
 The wire diameter: 1.8mm  
 Impossible to put the pin into the tube to push the disco  
 The wire can not be twist

**We are applying patent for the structure. please compare the old structure on page 2**



The tube is just for 1.5/1.6mm wire  
 It is made with zinc and coated with ABS



(Optionally)  
 Wire end encapsulated

## Seal Classification

- + Security Seal
- + Tensile strength: >220kgs

## Material

- + The lock housing is ZINC and covered with ABS
- + The wire is NPC galvanized cable
- + The standard wire is 1.8\*300mm

## Working Temperature

- + -50°C to 120°C

## How to open it ?

- + Cut the metal wire.

## Printing

- + Laser engraving
- + Company Logo/Name;
- + The readable bar code is available

## Package

- + 250pcs per box
- + 1000pcs per carton
- + Net weight: 13.5kgs
- + Gross weight: 14.8kgs
- + Measure: 370\*310\*240mm

## Production standard

- + ISO 17712/PAS

## Color

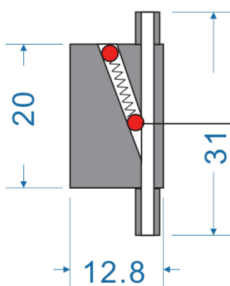
The standard color



Black White Orange Red Blue Green Yellow

## Compare the structure

This is defective structure in the market

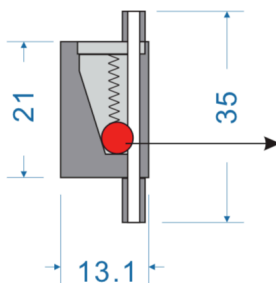


The lock mechanism is a Ball.

The defect is :

- 1) the tensile strength is less than 150kgs. The wire is not broken.
- 2) the wire can be twisted right and left and then take the wire out.
- 3) the wire is hard to go through the hole

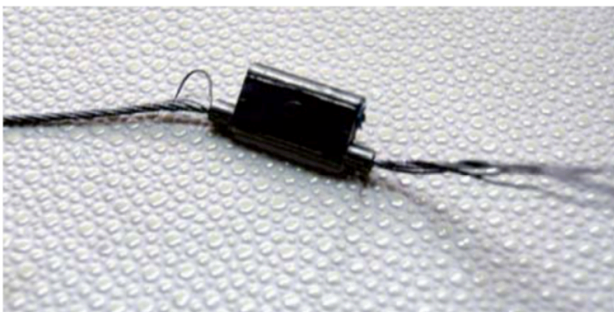
## The Patent structure



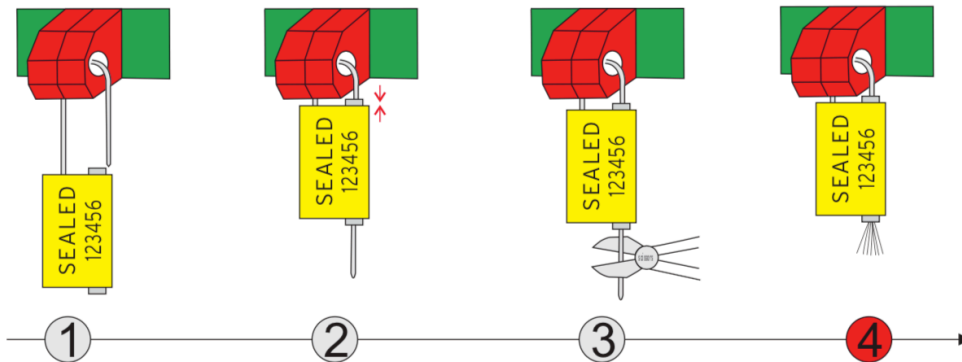
The lock mechanism is a Disco

The advantage is :

- 1) the tensile strength is more than 235kgs
- 2) the wire can go through well.
- 3) the wire can NOT be twisted.
- 4) The wire can NOT be took out.

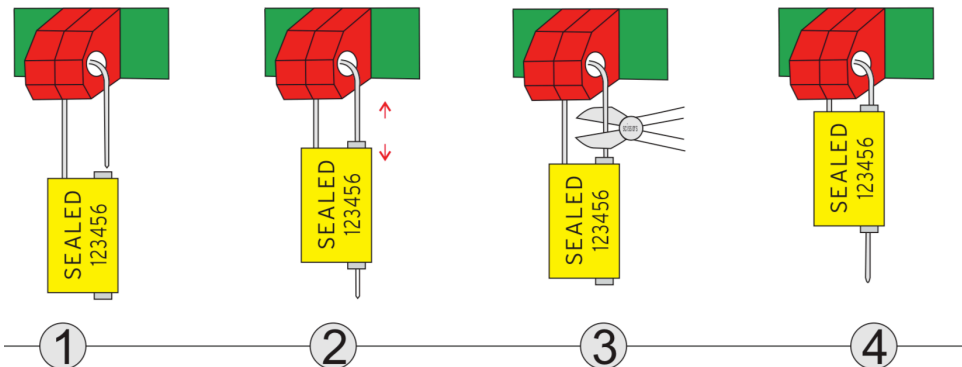


Patent protect your market



- ① Ready to seal it.
- ② Pull tight the wire very near to the lock chamber.
- ③ Cut the wire.
- ④ Because it is NPC wire, after cutting the wire, The wire scatter by itself.

The wire is NOT NPC wire OR the wire is covered with plastic.  
There is re-seal risk as following:



- ① Ready to seal it.
- ② NOT pull tight the wire very near to the lock chamber.
- ③ Cut the wire.
- ④ **Re-seal it.**